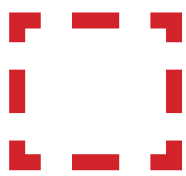


DEVELOPMENT APPLICATION

CASS, ASQUITH RACF



LEGEND



SUBJECT SITE



EXISTING ESTABLISHED TREE CANOPY

CONTEXT

project: 17-141s CASS, Asquith RACF
client: Chinese Australian Services Society Limited
date: 22.10.2019
revision: B
drawn: VH
checked: AL

TaylorBrammer
TAYLOR BRAMMER LANDSCAPE ARCHITECTS PTY LTD
SYDNEY STUDIO
218 Oxford Street Woollahra, NSW, 2025 E sydney@taylorbrammer.com.au T 61 2 9387 8655
Copyright of Taylor Brammer Landscape Architects Pty Ltd. AEN 61 068 724 988

00A

Internal courtyard design principles
The Four Noble Ones



Overall Design

Seeks to site and ground the development proposal within the predominant native tree character of the street, Asquith Oval and Southern Council reserve. Existing native canopy trees are retained where possible and supplemented as appropriate. New internal courtyard and under story planting is created in a manner complementary to the cultural landscape typology of the Asquith area.



Plum Blossom

Blossoms throughout winter with subtle fragrance at the coldest times of the year.



Bamboo

Flexibility and strength of the bamboo stalk represents the human values of cultivation integrity in which one yields but does not break.



Orchid

The orchid represents the beauty and grace of the flower is striking, but its fragrance is never overpowering, Symbolizing humility and nobility.



Chrysanthemum

Blooming in the cold autumn air and foretells the coming of winter, which symbolizes the virtue to withstand all adversities.

DESIGN APPROACH



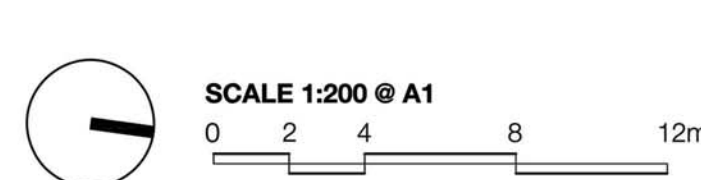
LANDSCAPE MASTERPLAN

- 01 PROPOSED STREETSCAPE TO COUNCIL'S GUIDELINES PROVIDING DETAIL AND STREET ADDRESS
- 02 PROPOSED DRIVEWAY
- 03 PEDESTRIAN FOOTPATH RETAINED
- 04 EXISTING TREES RETAINED

- 05 PROPOSED LOCATION OF SUBSTATION
- 06 NATIVE PLANTING (STIF) BUFFER TO BOUNDARIES WITH 1.8 M TIMBER FENCE
- 07 PLANTING BUFFER TO STREET INTERFACES PROVIDING PRIVACY
- 08 NEW TREE REPRESENTATIVE OF STIF VEGETATION COMMUNITY (SYDNEY TURPENTINE IRONBARK FOREST)

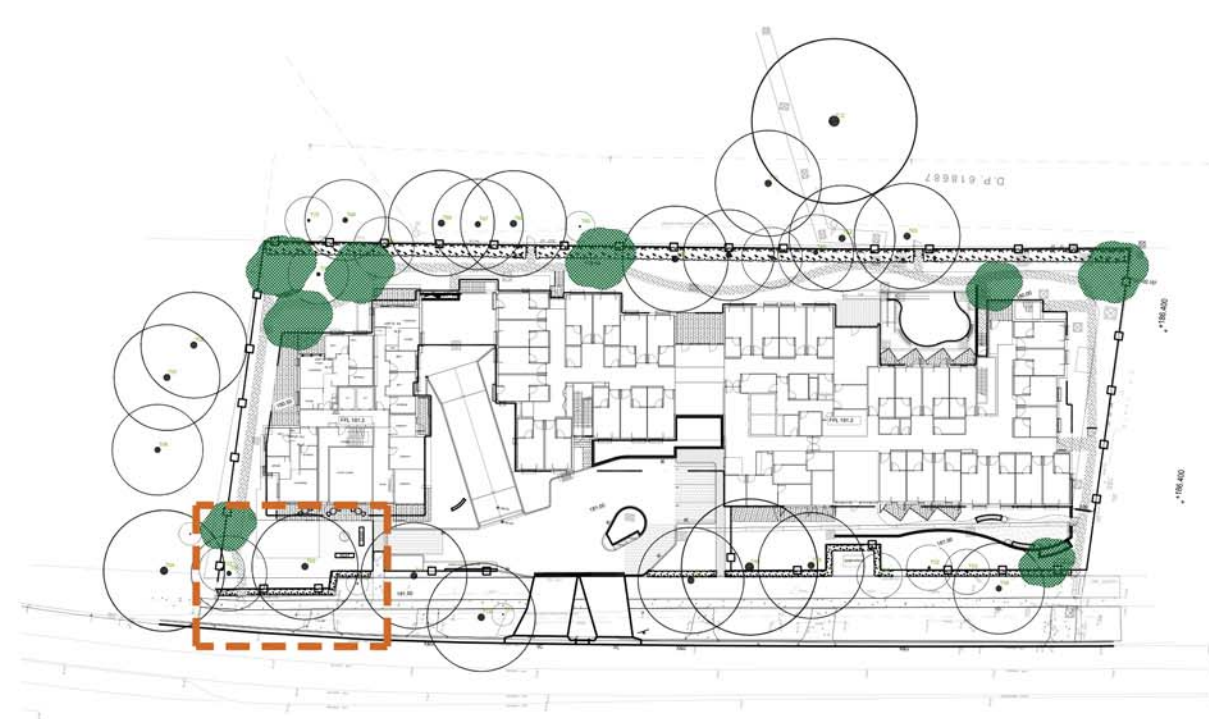
- 09 FIRE EGRESS
- 10 FEATURE DECIDUOUS TREES HIGHLIGHTING ENTRANCE OF THE BUILDINGS
- 11 PLANTING BUFFER PROVIDING PRIVACY TO RESIDENTS' BEDROOMS
- 12 SECURITY GATES

- 13 RESIDENTS VEGETABLE GARDENS
- 14 200mm HIGH FEATURE WALL
- 15 PLUM BLOSSOM GARDEN
- 16 800mm WIDE PLANTER FOR GREEN WALL



project: 17-141s CASS, Asquith RACF
client: Chinese Australian Services Society Limited
date: 26.10.2020
revision: G
drawn: DA
checked: AL

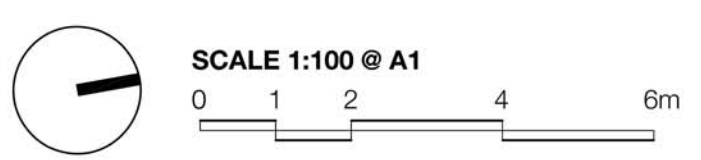
TaylorBrammer
TAYLOR BRAMMER LANDSCAPE ARCHITECTS PTY LTD
SYDNEY STUDIO
218 Oxford Street Woolahra, NSW, 2025 E sydney@taylorbrammer.com.au T 61 2 9387 8855
Copyright of Taylor Brammer Landscape Architects Pty Ltd. ABN 61 098 724 998



KEY PLAN

SOUTH COURTYARD

- 01 EXISTING TREES RETAINED
- 02 PROPOSED STREETSCAPE TO COUNCIL'S GUIDELINES PROVIDING DETAIL AND STREET ADDRESS
- 03 PUBLIC FOOTPATHS AND GRASS VERGE TO COUNCIL'S GUIDELINES
- 04 BAMBOO BUFFER TO STREET INTERFACES PROVIDING PRIVACY AND FILTERED VIEWS TO THE BUILDINGS
- 05 FIRE EGRESS
- 06 PRIVACY HEDGING TO PALISADE FENCE
- 07 PERGOLA WITH CLIMBER OVER SITTING AREAS
- 08 SITTING NOOKS WITH BAMBOOS SURROUNDINGS
- 09 WATER FEATURE
- 10 PRIVACY BAMBOO HEDGE TO ADDRESS WALLS AND BEDROOMS WINDOWS
- 11 COMBINATION OF NATIVE AND DECIDUOUS PLANTING PROVIDING SEASONAL INTERESTS
- 12 FEATURE PAVING TO FOOTPATH
- 13 FEATURE NARROW TREE TO ENTRY OF THE CAR PARK
- 14 SIGNAGE TO ENTRY
- 15 HYDROPAPER AS PER CIVIL ENG DETAILS
- 16 NEW TREE REPRESENTATIVE OF STIF VEGETATION COMMUNITY (SYDNEY TURPENTINE IRONBARK FOREST)

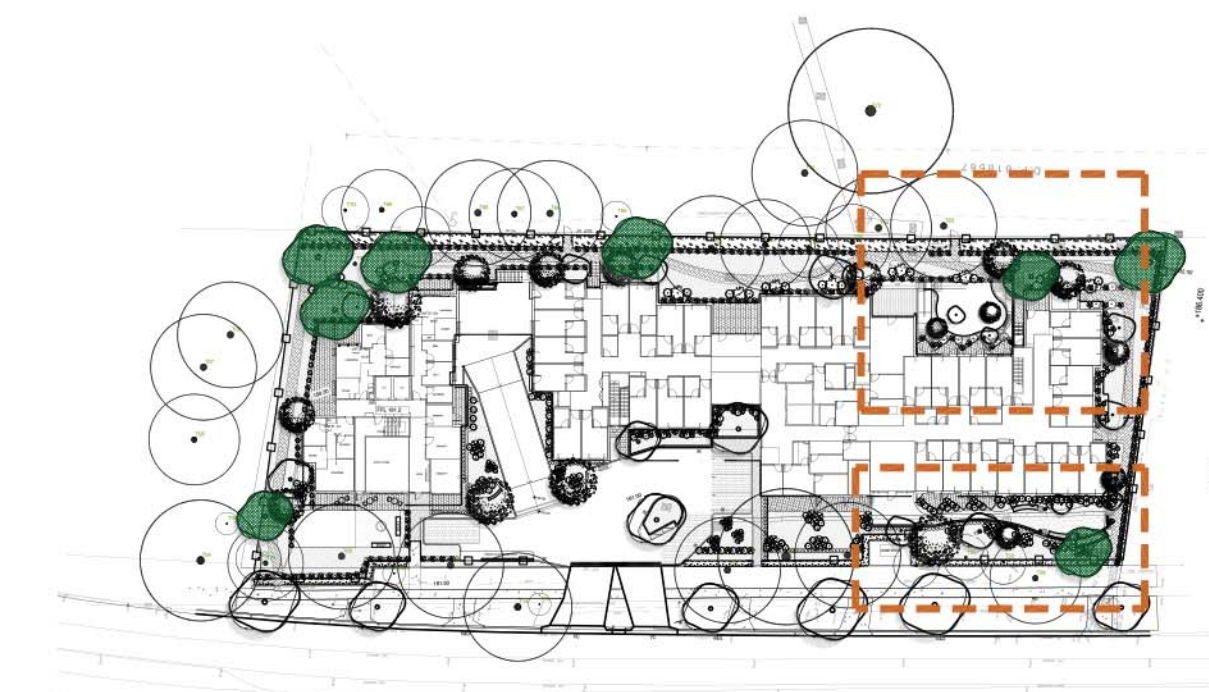


LEGEND

- SITE BOUNDARY
- EXISTING TREE RETAINED
- EXISTING CONTOUR
- PROPOSED NEW CONTOUR
- PROPOSED TREES
- PROPOSED SHRUBS
- TURF
- PROPOSED GROUNDCOVERS
- PROPOSED PAVING
- 1.8M TIMBER FENCE
- PALISADE FENCE WITH SECURITY GATES
- PERMEABLE PAVING
- NEW TREE REPRESENTATIVE OF STIF VEGETATION COMMUNITY (SYDNEY TURPENTINE IRONBARK FOREST)

project: 17-141s CASS, Asquith RACF
client: Chinese Australian Services Society Limited
date: 26.10.2020
revision: G
drawn: DA
checked: AL

TaylorBrammer
TAYLOR BRAMMER LANDSCAPE ARCHITECTS PTY LTD
SYDNEY STUDIO
218 Oxford Street Woolahra, NSW, 2025 E:sydney@taylorbrammer.com.au T:61 2 9387 8855
Copyright of Taylor Brammer Landscape Architects Pty Ltd. ABLN 01 095 724 955



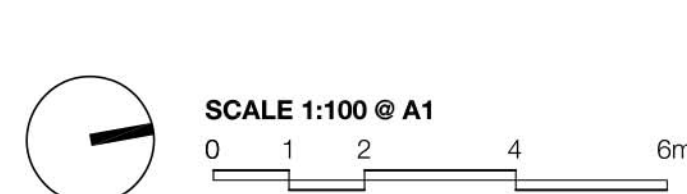
KEY PLAN

01 COMMUNAL RAISED VEGETABLE GARDEN

- 02 COMBINATION OF NATIVE AND DECIDUOUS PLANTING PROVING SEASONAL INTERESTS
- 03 FIRE EGRESS
- 04 RAISED PLANTERS WITH FEATURE PLUM TREES TO COURTYARD

05 EXISTING TREES RETAINED

- 06 PROPOSED STREETSCAPE TO COUNCIL'S GUIDELINES PROVIDING DETAIL AND STREET ADDRESS
- 07 PUBLIC FOOTPATHS AND GRASS VERGE TO COUNCIL'S GUIDELINES
- 08 PLANTING BUFFER TO STREET INTERFACES PROVIDING PRIVACY AND FILTERED VIEWS TO THE BUILDINGS
- 09 VEGETABLE GARDEN TO DEMENTIA COURTYARD
- 10 200mm HIGH FEATURE WALL
- 11 SITING AREAS
- 12 ORNAMENTAL POTS WITH PLANTING PROVIDING SEASONAL INTEREST
- 13 OPEN TURF AREA FOR OUTDOOR ACTIVITIES
- 14 ELEVATED DECK OVER OSD TANK PROVIDING PEDESTRIAN ACCESS.
- 15 NEW TREE REPRESENTATIVE OF STIF VEGETATION COMMUNITY (SYDNEY TURPENTINE IRONBARK FOREST)




LEGEND

-
- SITE BOUNDARY
- EXISTING TREE RETAINED

-
- 20.0 EXISTING CONTOUR
18.5 PROPOSED NEW CONTOUR
PROPOSED TREES

- | | |
|-------------|---------------------|
| • TOW 45.66 | TOP OF WALL LEVEL |
| • SSL 45.66 | TOP OF SLAB LEVEL |
| • EX 45.66 | EXISTING SPOT LEVEL |
| • RIL 45.66 | PROPOSED SPOT LEVEL |

-  TURF
-  PROPOSED SHRUBS

- 
- PROPOSED GROUNDCOVERS
- PROPOSED PAVING

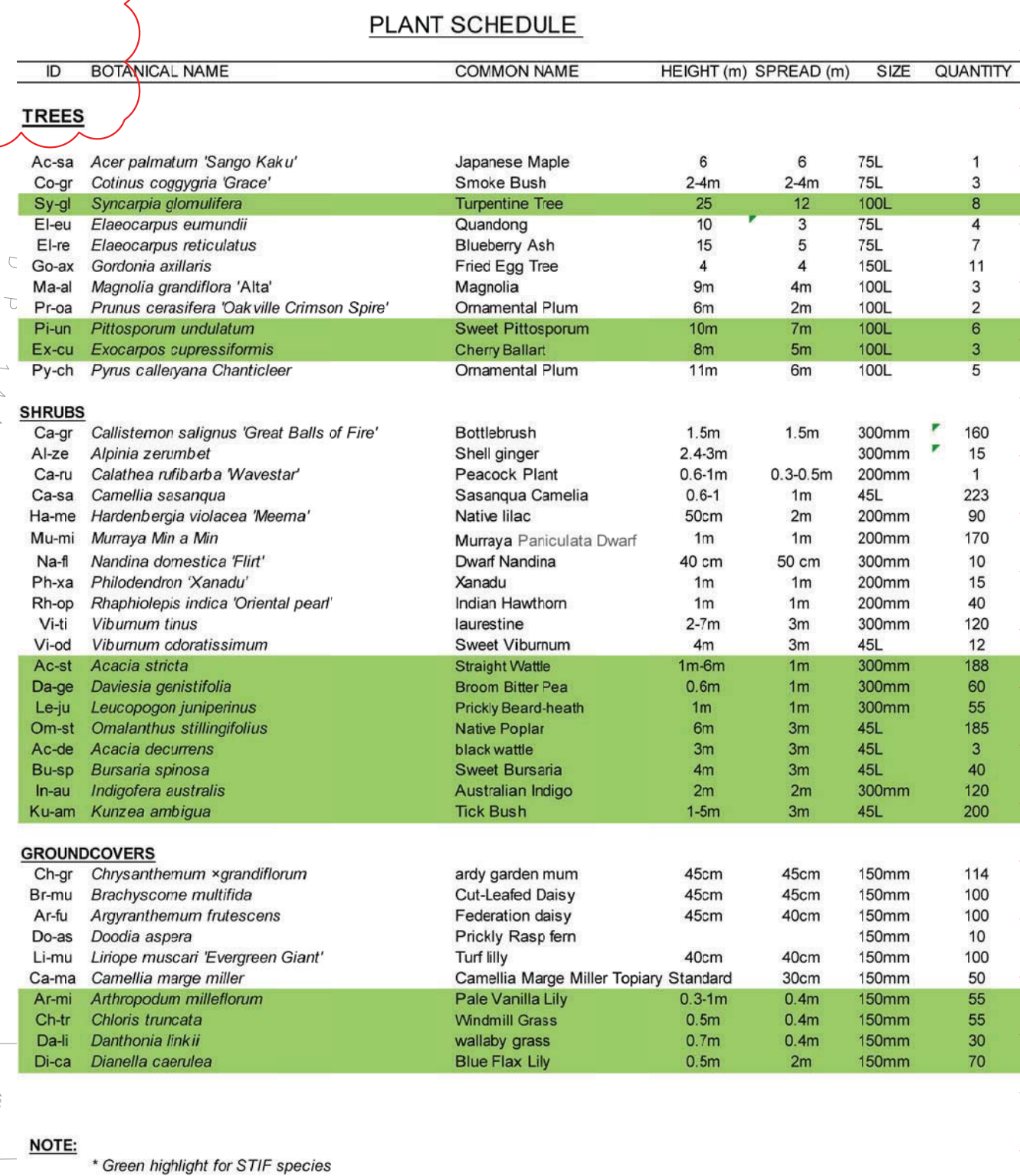
- 1.8M TIMBER FENCE
- PALISADE FENCE WITH SECURITY GATES

- 
- PERMEABLE PAVING
- NEW TREE REPRESENTATIVE OF STI
(SYDNEY TURPENTINE IRONBARK
FOREST)

project: 17-141s CASS, Asquith RACF
client: Chinese Australian Services Society Limited
date 26.10.2020
revision: G
drawn: DA
checked: AL

TaylorBrammer

TAYLOR BRAMMER LANDSCAPE ARCHITECTS PTY LTD
SYDNEY STUDIO
218 Oxford Street Woollahra, NSW, 2025 E sydney@taylorbrammer.com.au T 61 2 9387 8855
Copyright of Taylor Brammer Landscape Architects Pty Ltd. ABN 61 098 724 981



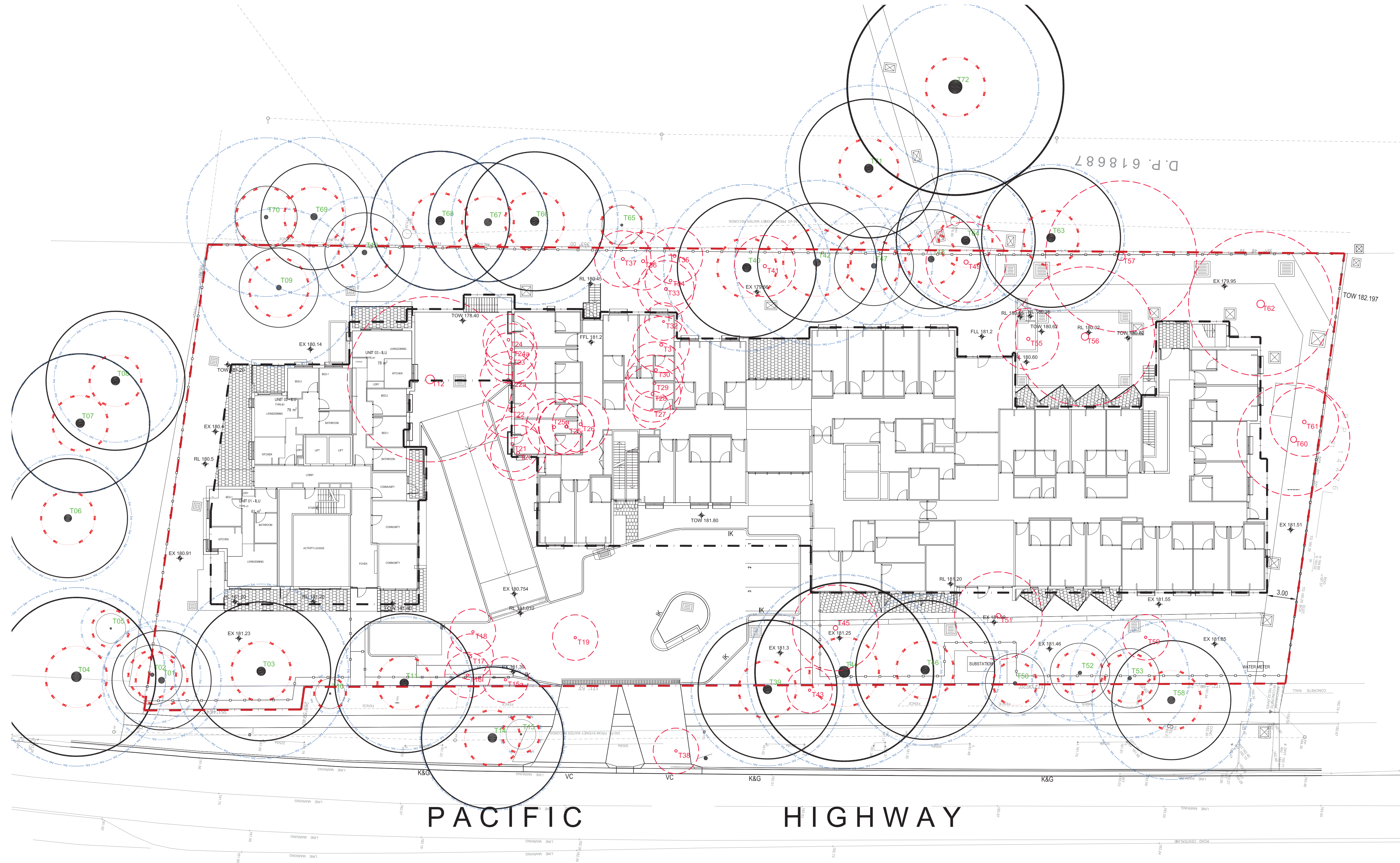
NOTE: * Green highlight for STIF species

PLANTING PLAN

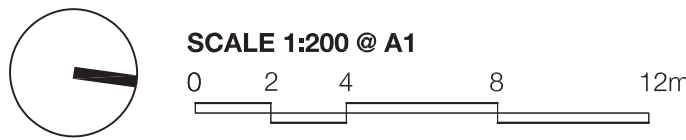
EXISTING VEGETATION SCHEDULE

ID	BOTANICAL NAME	COMMON NAME	HEIGHT (m)
TREES RETAINED			
T1	<i>Eucalyptus resinifera</i>	Red mahogany	16
T2	<i>Eucalyptus resinifera</i>	Red mahogany	17
T3	<i>Eucalyptus eugenioides</i>	Thin-leaved stringybark	21
T4	<i>Eucalyptus paniculata</i>	The grey ironbark	27
T5	<i>Banksia integrifolia</i>	Coast Banksia	8
T6	<i>Eucalyptus paniculata</i>	The grey ironbark	21
T7	<i>Eucalyptus resinifera</i>	Red mahogany	18
T8	<i>Angophora costata</i>	Smooth-barked apple	16
T9	<i>Araucaria heterophylla</i>	Norfolk Island pine	18
T10	<i>Banksia integrifolia</i>	Coast Banksia	5
T11	<i>Angophora costata</i>	Smooth-barked apple	17
T13	<i>Syncarpia glomulifera</i>	Turpentine tree	9
T14	<i>Angophora costata</i>	Smooth-barked apple	10
T15	<i>Hakea salicifolia</i>	Hakea	4
T39	<i>Eucalyptus resinifera</i>	Red mahogany	17
T40	<i>Eucalyptus resinifera</i>	Red mahogany	15
T42	<i>Syncarpia glomulifera</i>	Turpentine tree	12
T44	<i>Eucalyptus paniculata</i>	The grey ironbark	25
T46	<i>Angophora costata</i>	Smooth-barked apple	14
T47	<i>Pinus radiata</i>	Monterey Pine	15
T48	<i>Syncarpia glomulifera</i>	Turpentine tree	13
T50	<i>Jacaranda mimosifolia</i>	Blue Jacaranda	6
T52	<i>Camellia Sasanqua</i>	Sasanqua	6
T53	<i>Photinia spp</i>	Photinia	5
T58	<i>Eucalyptus scoparia</i>	Wallangarra White Gum	17
T63	<i>Eucalyptus microcorys</i>	Tallowwood	17
T64	<i>Eucalyptus saligna</i>	Sydney Blue Gum	19
T65	<i>Eucalyptus haemastoma</i>	Broad Leaved Scnbbly Gum	7
T66	<i>Eucalyptus microcorys</i>	Tallowwood	15
T67	<i>Eucalyptus microcorys</i>	Tallowwood	17
T68	<i>Eucalyptus microcorys</i>	Tallowwood	17
T69	<i>Eucalyptus microcorys</i>	Tallowwood	17
T70	<i>Eucalyptus microcorys</i>	Tallowwood	8
T71	<i>Angophora costata</i>	Smooth-barked apple	17
T71a	<i>Syncarpia glomulifera</i>	Turpentine tree	14
T72	<i>Angophora costata</i>	Smooth-barked apple	20
TREESTO BE REMOVED			
T12	<i>Pittosporum undulatum</i>	Sweet pittosporum	17
T15a	<i>Callistemon viminalis</i>	Weeping Bottlebrush	5
T16	<i>Syagrus romanzoffianum</i>	Cocos Palm	8
T17	<i>Syagrus romanzoffianum</i>	Cocos Palm	8
T17a	<i>Cinnamomum camphora</i>	Camphor Laurel	7
T18	<i>Syagrus romanzoffianum</i>	Cocos Palm	9
T19	<i>Archontophoenix alexandrae</i>	Alexandra palm	8
T20	<i>Syagrus romanzoffianum</i>	Cocos Palm	8
T21	<i>Cupressus sempervirens</i>	Italian cypress	7
T22	<i>Syagrus romanzoffianum</i>	Cocos Palm	8
T22a	<i>Syagrus romanzoffianum</i>	Cocos Palm	8
T23	<i>Syagrus romanzoffianum</i>	Cocos Palm	8
T24	<i>Syagrus romanzoffianum</i>	Cocos Palm	9
T24a	<i>Hakea salicifolia</i>	Hakea	5
T25	<i>Archontophoenix alexandrae</i>	Alexandra palm	9
T25a	<i>Archontophoenix alexandrae</i>	Alexandra palm	7
T26	<i>Archontophoenix alexandrae</i>	Alexandra palm	9
T27	<i>Archontophoenix alexandrae</i>	Alexandra palm	11
T28	<i>Syagrus romanzoffianum</i>	Cocos Palm	6
T29	<i>Archontophoenix alexandrae</i>	Alexandra palm	10
T30	<i>Syagrus romanzoffianum</i>	Cocos Palm	7
T31	<i>Syagrus romanzoffianum</i>	Cocos Palm	7
T32	<i>Cyathea cooperi</i>	Tree Fern	4
T33	<i>Melaleuca linarifolia</i>	Narrow-leaved paperbar	7
T34	<i>Archontophoenix alexandrae</i>	Alexandra palm	8
T35	<i>Washingtonia robusta</i>	Mexican Fan Palm	10
T36	<i>Syagrus romanzoffianum</i>	Cocos Palm	9
T37	<i>Syagrus romanzoffianum</i>	Cocos Palm	9
T38	<i>Prunus spp</i>	Prunus species	3
T41	<i>Macadamia spp</i>	Macadamia	6
T43	<i>Cupressus sempervirens</i>	Italian cypress	8
T45	<i>Angophora costata</i>	Smooth-barked apple	14
T49	<i>Cupressus sempervirens</i>	Italian cypress	8
T49a	<i>Morus nigra</i>	Black Mulberry	4
T51	<i>X Cupressocyparis leylandii</i>	Cpress 'Castlewellan Gold'	8
T53a	<i>Ceratopetalum gummiferum</i>	NSW Christmas Bush	6
T54	<i>Jacaranda mimosifolia</i>	Blue Jacaranda	8
T54a	<i>Citrus spp</i>	Citrus species	5
T55	<i>Acer palmatum</i>	Smooth Japanese Maple	5
T56	<i>Angophora costata</i>	Smooth-barked apple	14
T57	<i>Syncarpia glomulifera</i>	Turpentine tree	15
T57a	<i>Araucaria heterophylla</i>	Norfolk Island pine	7
T59	<i>Melaleuca Linarifolia</i>	Snow in Summer	5
T60	<i>Eucalyptus microcorys</i>	Tallowwood	20
T61	<i>Schinus molle</i>	Peppercorn	8
T62	<i>Schinus molle</i>	Peppercorn	8

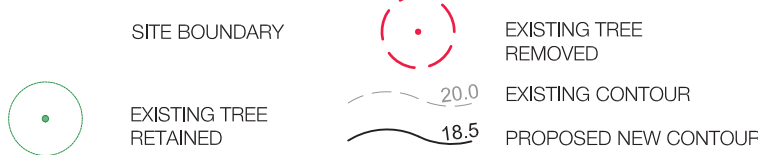
NOTE:
1 Tree heights as per arborist report prepared by Jack Williams, Urban Arbor 29th July 2020, Revision C



TREE RETENTION AND REMOVAL PLAN

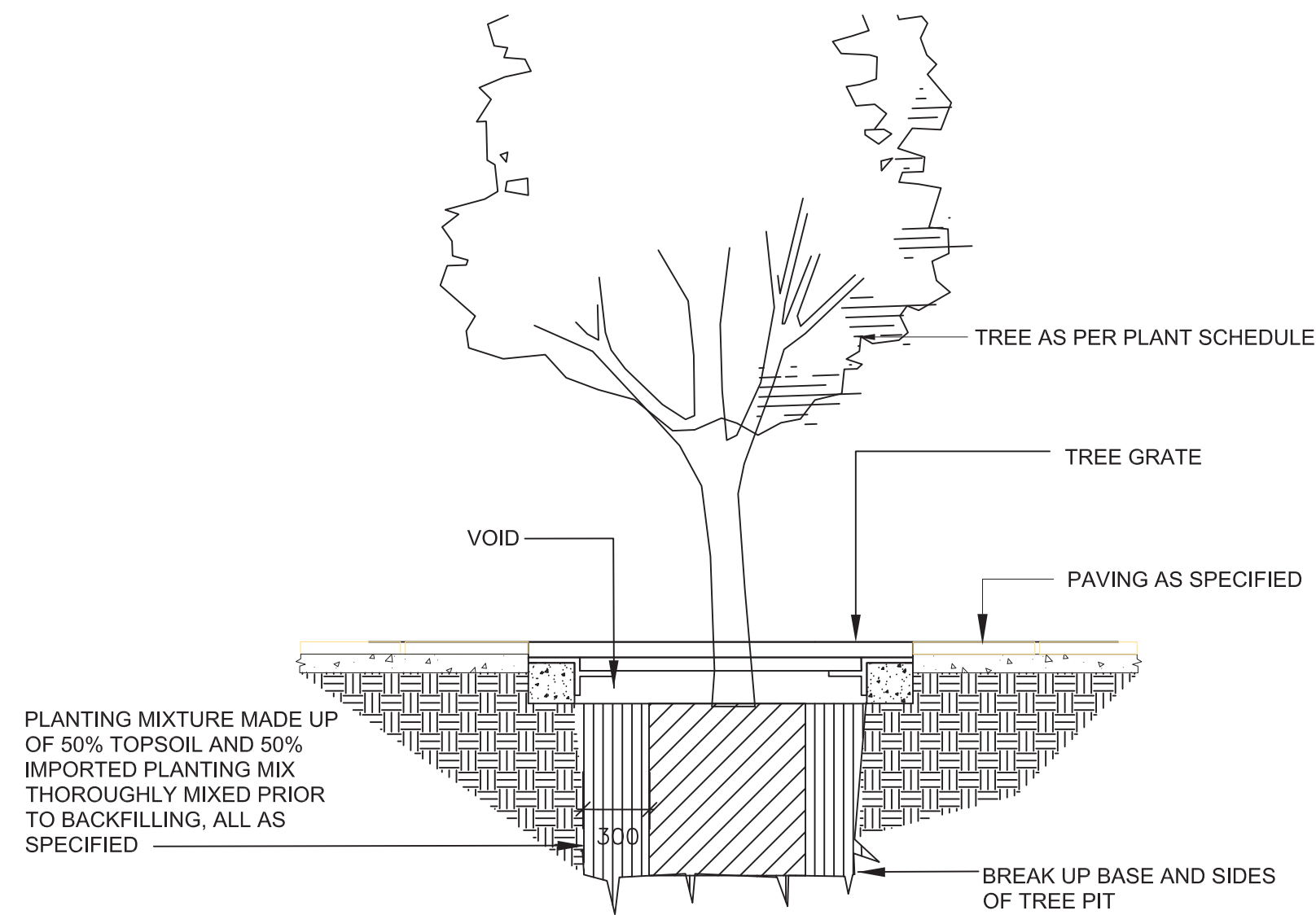


LEGEND



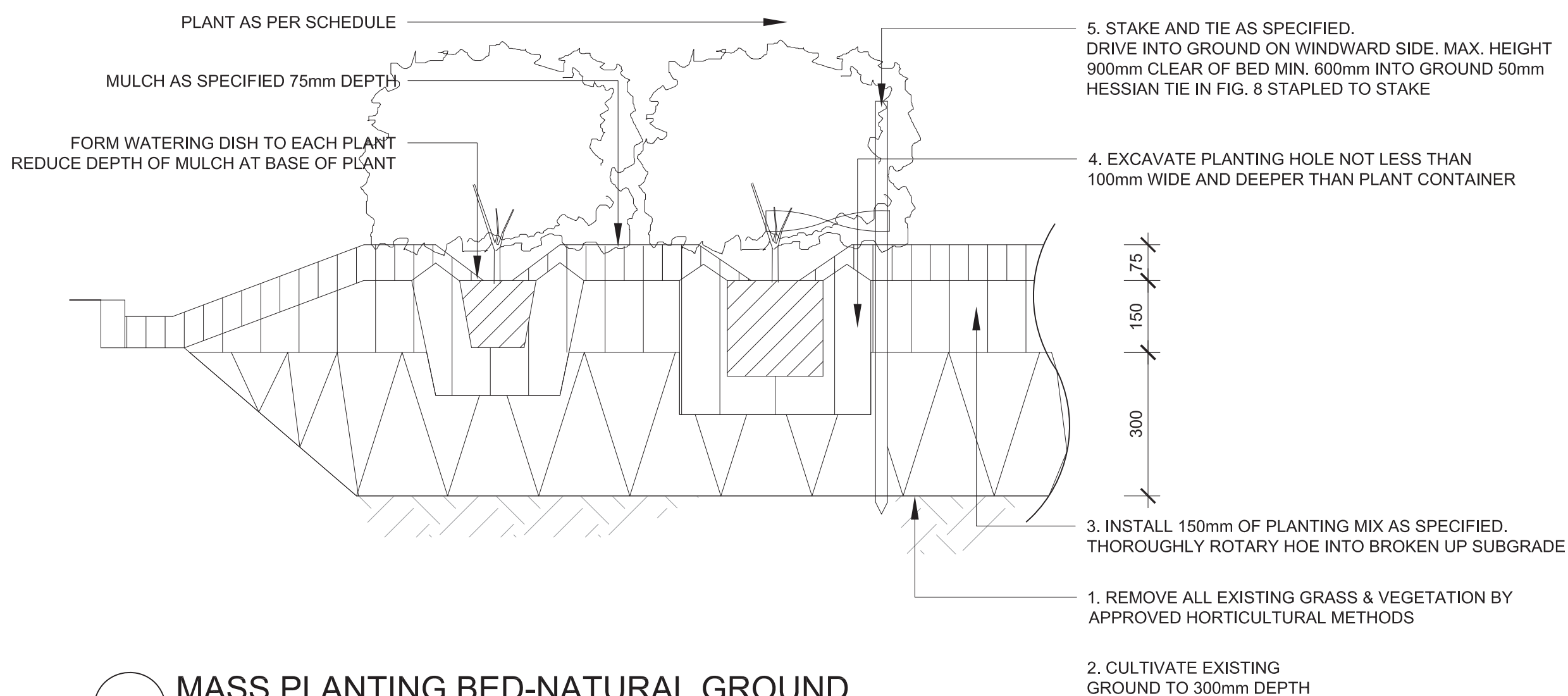
project: 17-141s CASS, Asquith RACF
client: Chinese Australian Services Society Limited
date: 26.10.2020
revision: F
drawn: DA
checked: AL

TaylorBrammer
TAYLOR BRAMMER LANDSCAPE ARCHITECTS PTY LTD
218 Oxford Street Woollahra, NSW, 2025 E sydney@taylorbrammer.com.au T 61 2 9397 8855
Copyright of Taylor Brammer Landscape Architects Pty Ltd. ABN 61 098 724 988

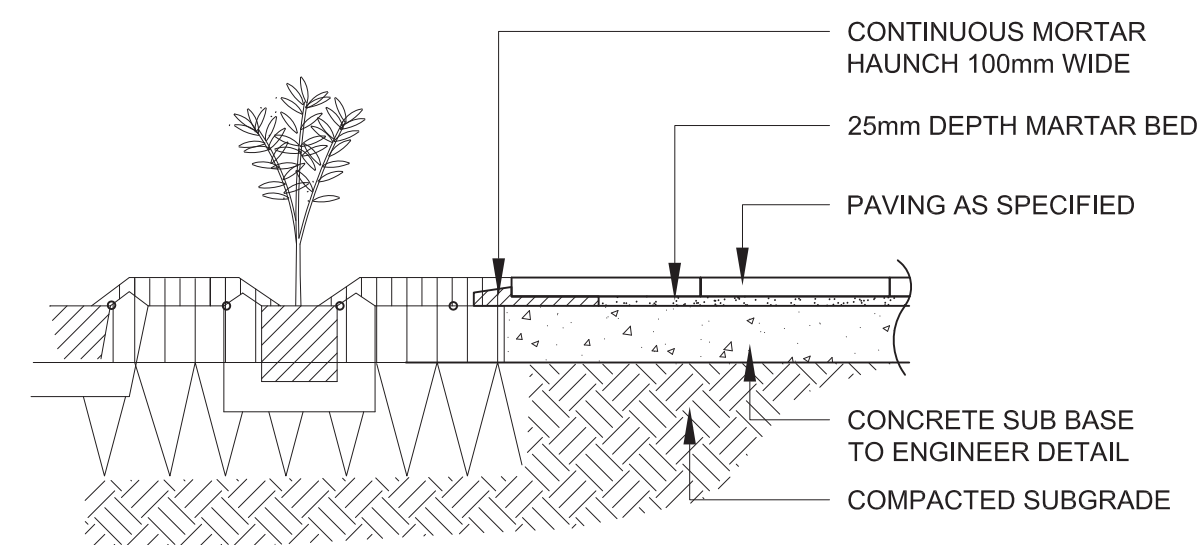


NOTE: ENSURE PLANTS ARE WATERED THOROUGHLY PRIOR TO PLANTING AND IMMEDIATELY FOLLOWING PLANTING INSTALLATION

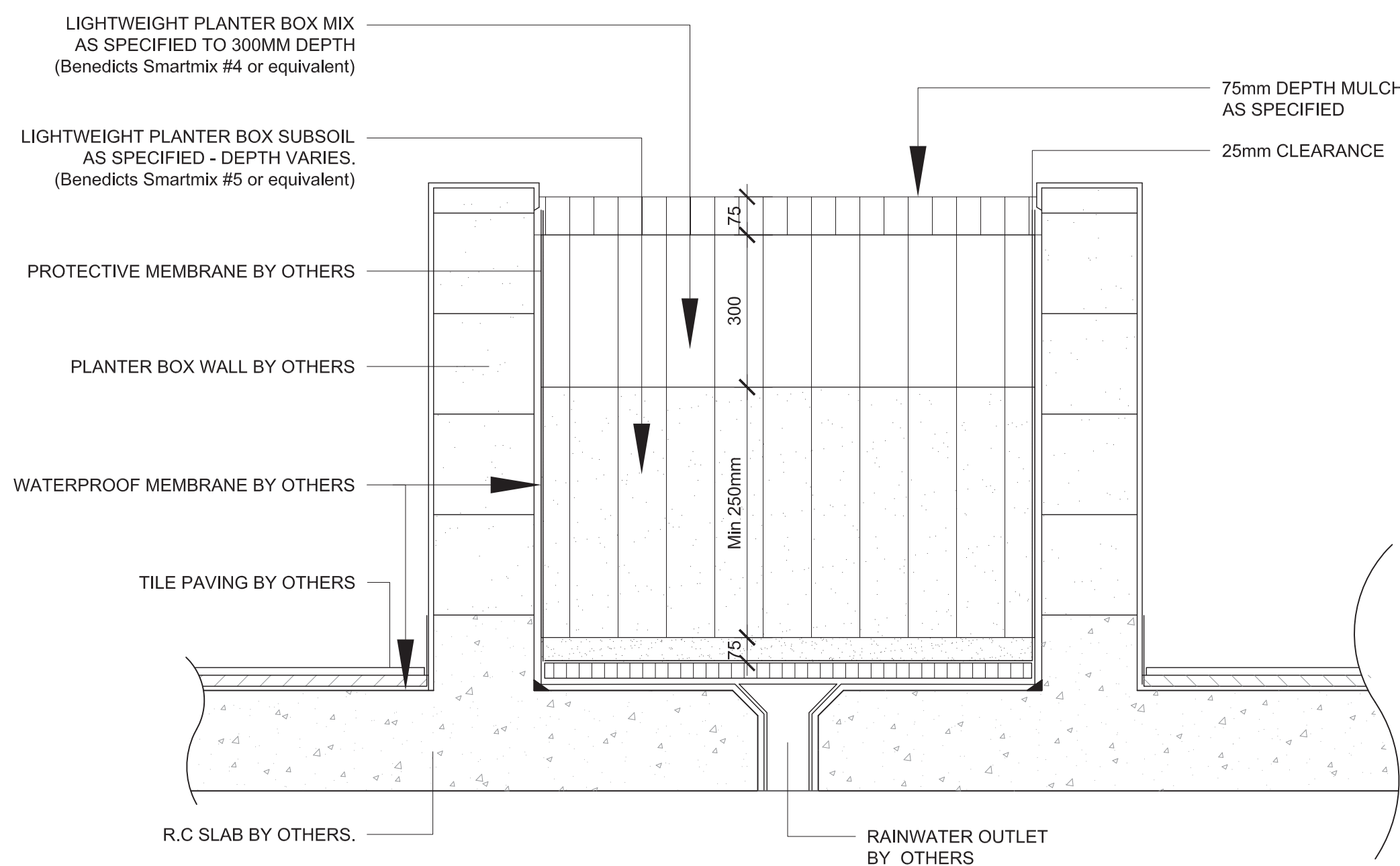
1 TREE PLANTING IN PAVING SCALE 1:20



2 MASS PLANTING BED-NATURAL GROUND TYPICAL SECTION 1:10



3 PAVING SECTION 1:20



4 RAISED PLANTER BOX TYPICAL SECTION 1:10

project: 17-141s CASS, Asquith RACF
client: Chinese Australian Services Society Limited
date: 20.07.2020
revision: P2
drawn: DA
checked: AL

TaylorBrammer
TAYLOR BRAMMER LANDSCAPE ARCHITECTS PTY LTD
SYDNEY STUDIO
216 Oxford Street Woolahra, NSW, 2025 E sydney@taylorbrammer.com.au T 61 2 9387 8855
Copyright of Taylor Brammer Landscape Architects Pty Ltd. ABN 61 038 724 988

LD1